



RECP #: 754597
 RECORDED 6/5/2019 AT 3:37 PM BK# 2624 PG# 266
 Debra K. Lee, CLERK OF LARAMIE COUNTY, WY PAGE 1 OF 1

STATE OF WYOMING CORNER RECORD

(In compliance with the CORNER PERPETUATION AND FILING ACT, Wyoming Statutes, 1997 Section 33-29-140, et. seq., and the Rules and Regulations of the Board of Registrations for Professional Engineers and Professional Land Surveyors)

SOUTHWEST CORNER SECTION 09, T. 17 N., R. 62 W., 6TH P.M., LARAMIE COUNTY, WYOMING

GLO: SANDSTONE 16X10X10 SET 10 IN DEEP MARKED WITH 4 NOTCHES ON SOUTH SIDE AND 4 NOTCHES ON EAST SIDE FOR THE COR TO SEC 8, 9, 16, 17.

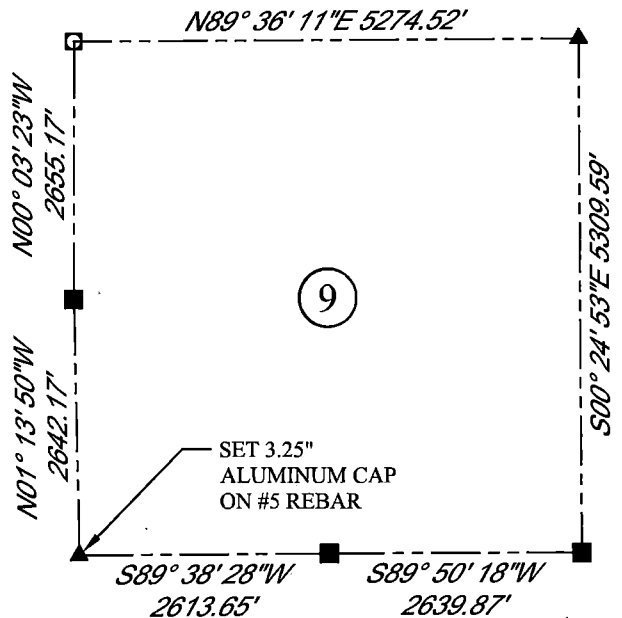
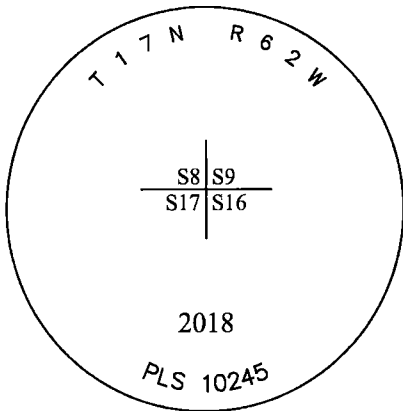
FOUND: NOTHING.

SET: 3.25" ALUMINUM CAP ON #5 REBAR, 6" AT SURFACE, MARKED AS SHOWN. SET A FIBERGLASS ROD ON N. SIDE CORNER IS SET 1' ON N. SIDE OF E & W FENCE LINE. EAST OF S/E/W FENCE CORNER.



SCALE: NONE
 NORTH DETERMINED BY
 G.P.S OBSERVATIONS

SET 3.25" ALUMINUM CAP, STAMPED AS SHOWN



LEGEND:

- FOUND BLM CAP
- FOUND USFS CAP
- FOUND STONE
- FOUND PRIVATE MONUMENT
- ◆ CALCULATED POSITION
- ▲ SET MONUMENT (LS10245)
- SECTION LINE

DATE OF FIELD WORK: 10/08/2018 OFFICE REFERENCE: MERIDEN

CROSS INDEX DIAGRAM

	1	2	3	4	5	6	7	8	9	10	11	12	13	14	15	16	17	18	19	20	21	22	23	24	25			
A																											B	
B																												C
C			6			5				4				3					2								D	
D																												E
E																												F
F																												G
G			7			8				9				10					11									H
H																												I
I																												J
J																												K
K																												L
L			18			17				16				15					14									M
M																												N
N																												O
O																												P
P			19			20				21				22					23									Q
Q																												R
R																												S
S																												T
T			30			29				28				27					26									U
U																												V
V																												W
W																												X
X			31			32				33				34					35									Y
Y																												Z
Z	1	2	3	4	5	6	7	8	9	10	11	12	13	14	15	16	17	18	19	20	21	22	23	24	25			

WOOD
 2615 AVIATION DRIVE
 SHERIDAN, WY 82801
 PH: 307-675-6400



THIS CORNER RECORD WAS
 PREPARED BY ME OR UNDER
 MY DIRECTION AND
 SUPERVISION,
 SEAL AND SIGNATURE

